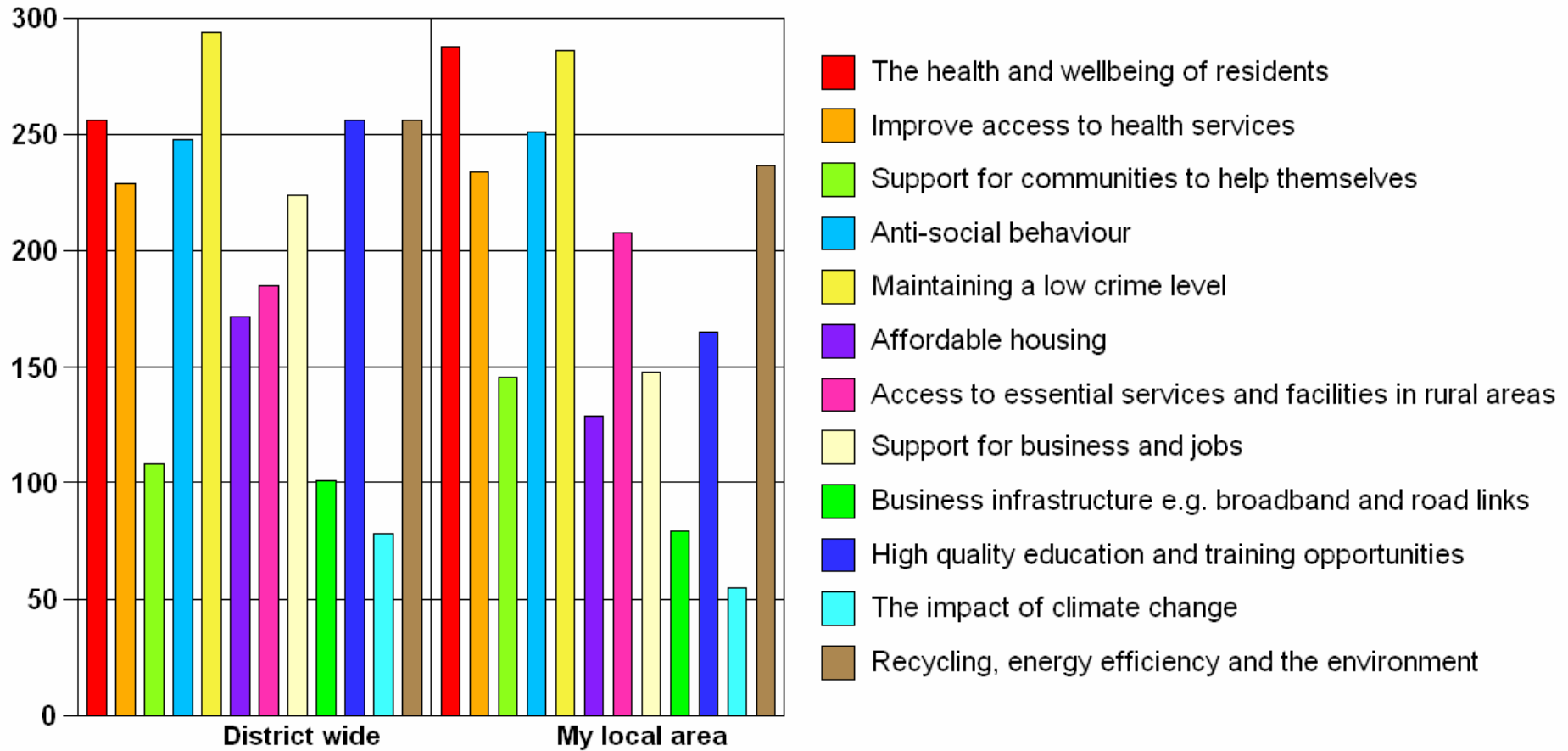


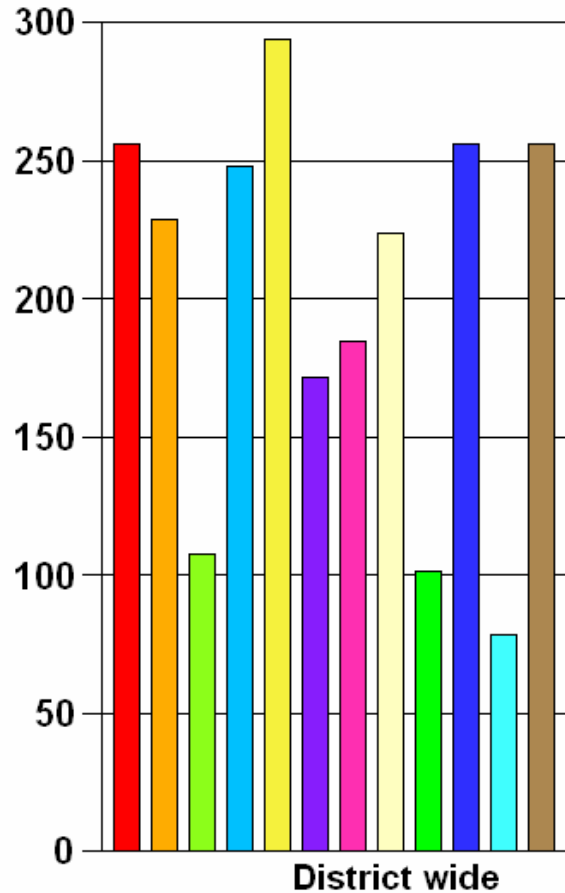
Residents top five priorities



Top Priorities
Break Down Figures

	District wide	My local area
The health and wellbeing of residents	256	288
Improve access to health services	229	234
Support for communities to help themselves	108	146
Anti-social behaviour	248	251
Maintaining a low crime level	294	286
Affordable housing	172	129
Access to essential services and facilities in rural areas	185	208
Support for business and jobs	224	148
Business infrastructure e.g. broadband and road links	101	79
High quality education and training opportunities	256	165
The impact of climate change	78	55
Recycling, energy efficiency and the environment	256	237

Top priorities District wide



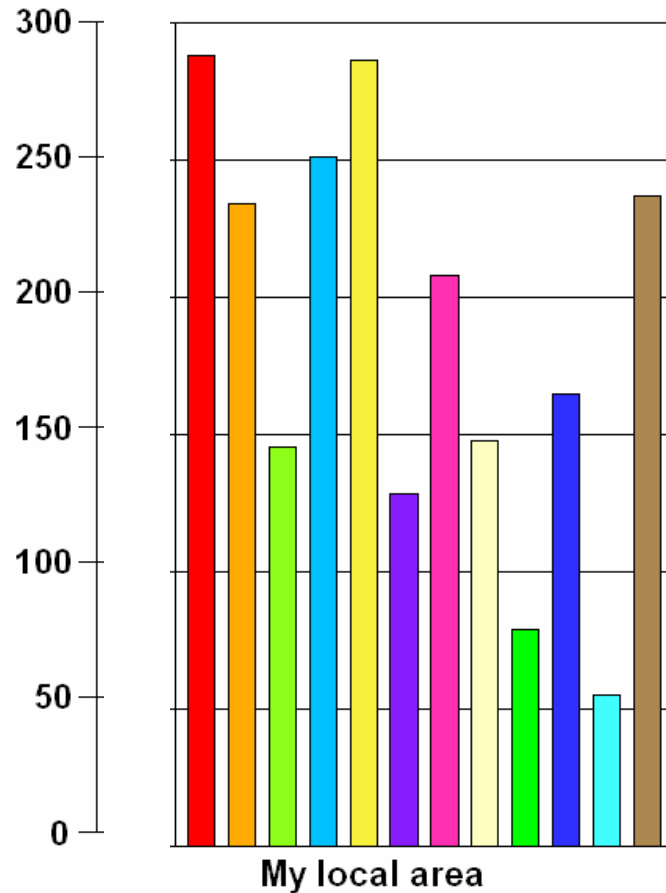
- The health and wellbeing of residents
- Improve access to health services
- Support for communities to help themselves
- Anti-social behaviour
- Maintaining a low crime level
- Affordable housing
- Access to essential services and facilities in rural areas
- Support for business and jobs
- Business infrastructure e.g. broadband and road links
- High quality education and training opportunities
- The impact of climate change
- Recycling, energy efficiency and the environment

1st – Maintaining a low crime level

2nd – The health and wellbeing of residents, High quality education and training opportunities and Recycling, energy, efficiency and the environment

3rd – Anti-social behaviour

Top Priorities Local Area

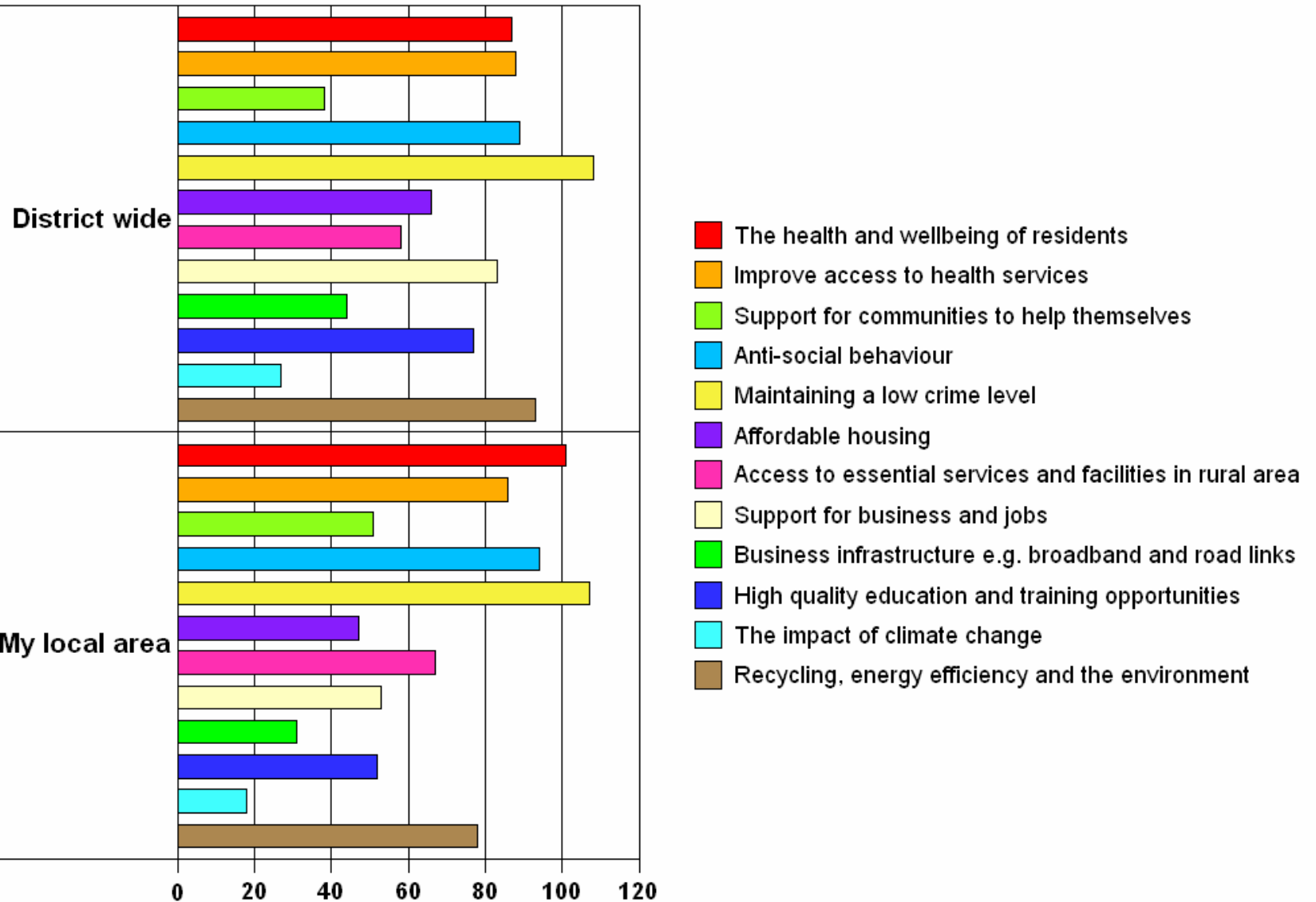


- The health and wellbeing of residents
- Improve access to health services
- Support for communities to help themselves
- Anti-social behaviour
- Maintaining a low crime level
- Affordable housing
- Access to essential services and facilities in rural areas
- Support for business and jobs
- Business infrastructure e.g. broadband and road links
- High quality education and training opportunities
- The impact of climate change
- Recycling, energy efficiency and the environment

- 1st – The health and wellbeing of residents
- 2nd – Maintaining a low crime level
- 3rd – Anti Social Behaviour
- 4th - Recycling, energy, efficiency and the environment
- 5th – Improve access to health services

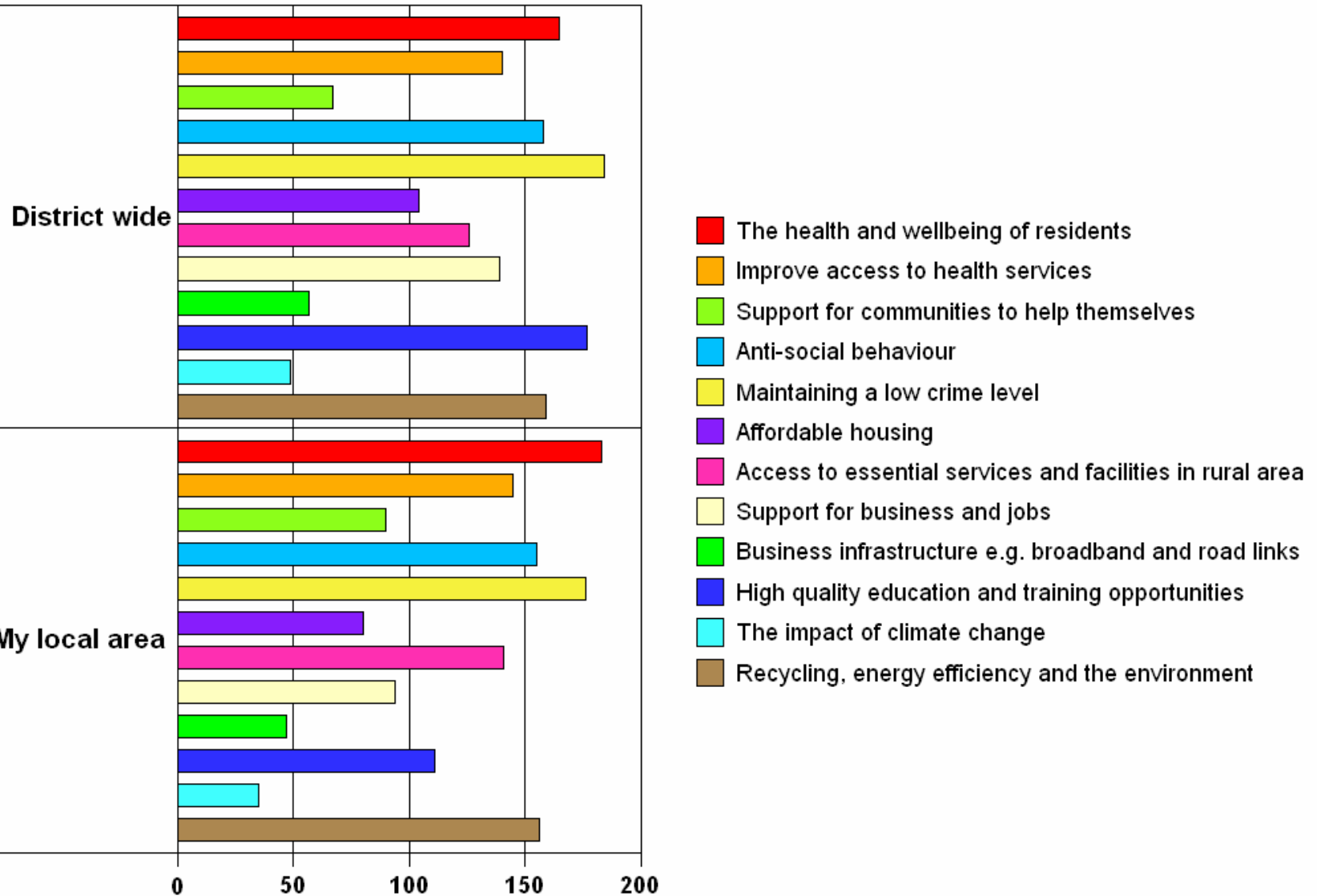
Top Priorities

Top Priorities Male gender break down



Top Priorities

Top Priorities Female gender break down



Top Priorities
Gender break down

	District wide		My local area	
	Male	Female	Male	Female
The health and wellbeing of residents	87	165	101	183
Improve access to health services	88	140	86	145
Support for communities to help themselves	38	67	51	90
Anti-social behaviour	89	158	94	155
Maintaining a low crime level	108	184	107	176
Affordable housing	66	104	47	80
Access to essential services and facilities in rural areas	58	126	67	141
Support for business and jobs	83	139	53	94
Business infrastructure e.g. broadband and road links	44	57	31	47
High quality education and training opportunities	77	177	52	111
The impact of climate change	27	49	18	35
Recycling, energy efficiency and the environment	93	159	78	156

Top Priorities for residents with disabilities

	District wide	My local area
The health and wellbeing of residents	25	28
Improve access to health services	21	25
Support for communities to help themselves	8	11
Anti-social behaviour	26	23
Maintaining a low crime level	25	23
Affordable housing	20	17
Access to essential services and facilities in rural areas	20	17
Support for business and jobs	23	11
Business infrastructure e.g. broadband and road links	7	5
High quality education and training opportunities	19	14
The impact of climate change	7	4
Recycling, energy efficiency and the environment	21	14

Top Priorities for residents with out disabilities

	District wide	My local area
The health and wellbeing of residents	191	211
Improve access to health services	174	173
Support for communities to help themselves	79	106
Anti-social behaviour	196	191
Maintaining a low crime level	224	213
Affordable housing	130	98
Access to essential services and facilities in rural areas	148	160
Support for business and jobs	169	114
Business infrastructure e.g. broadband and road links	80	60
High quality education and training opportunities	208	125
The impact of climate change	59	39
Recycling, energy efficiency and the environment	203	189

Top priorities age range
Local Area

	My local area							
	Under 18	18 to 24	25 to 34	35 to 44	45 to 54	55 to 64	65 to 74	75+
The health and wellbeing of residents	2	3	13	32	49	67	69	47
Improve access to health services	2	3	8	19	39	49	63	43
Support for communities to help themselves	1	0	5	15	25	41	35	21
Anti-social behaviour	4	2	18	26	45	60	55	34
Maintaining a low crime level	2	1	12	30	55	64	67	47
Affordable housing	5	6	4	12	18	31	29	22
Access to essential services and facilities in rural areas	0	3	10	17	32	63	48	31
Support for business and jobs	6	3	6	24	21	30	35	19
Business infrastructure e.g. broadband and road links	3	4	5	11	12	18	16	9
High quality education and training opportunities	3	2	11	20	23	44	32	28
The impact of climate change	2	3	4	7	9	10	10	8
Recycling, energy efficiency and the environment	3	5	14	24	47	55	58	26
Total	33	35	110	237	375	532	517	335

Top priorities age range
District Wide

	District wide							
	Under 18	18 to 24	25 to 34	35 to 44	45 to 54	55 to 64	65 to 74	75+
The health and wellbeing of residents	2	4	12	27	42	64	60	39
Improve access to health services	4	1	11	23	41	51	56	36
Support for communities to help themselves	1	0	5	12	16	27	25	17
Anti-social behaviour	5	5	15	26	38	62	56	33
Maintaining a low crime level	3	3	13	27	50	74	69	48
Affordable housing	4	7	7	12	25	43	41	30
Access to essential services and facilities in rural areas	1	3	9	15	28	48	45	31
Support for business and jobs	6	6	6	31	40	55	41	33
Business infrastructure e.g. broadband and road links	3	4	7	14	16	24	20	11
High quality education and training opportunities	6	6	18	36	36	56	61	33
The impact of climate change	2	4	6	8	19	13	16	6
Recycling, energy efficiency and the environment	5	6	16	23	46	58	57	36
Total	42	49	125	254	397	575	547	353

CM9	Total	District wide	My local area
Base			
The health and wellbeing of residents	206	143	166
Improve access to health services	175	130	125
Support for communities to help themselves	112	63	76
Anti-social behaviour	187	144	147
Maintaining a low crime level	208	173	162
Affordable housing	115	97	73
Access to essential services and facilities in rural areas	136	92	86
Support for business and jobs	162	138	84
Business infrastructure e.g. broadband and road links	64	48	34
High quality education and training opportunities	168	147	89
The impact of climate change	53	40	29
Recycling, energy efficiency and the environment	178	140	125

CM3	Total	District wide	My local area
Base			
The health and wellbeing of residents	34	26	27
Improve access to health services	34	23	23
Support for communities to help themselves	14	5	12
Anti-social behaviour	30	23	27
Maintaining a low crime level	34	25	30
Affordable housing	16	13	8
Access to essential services and facilities in rural areas	29	16	25
Support for business and jobs	14	14	10
Business infrastructure e.g. broadband and road links	21	15	9
High quality education and training opportunities	25	23	13
The impact of climate change	8	5	3
Recycling, energy efficiency and the environment	27	25	23

CM0	Total	District wide	My local area
Base			
The health and wellbeing of residents	81	53	62
Improve access to health services	79	49	62
Support for communities to help themselves	51	23	37
Anti-social behaviour	73	55	51
Maintaining a low crime level	84	63	60
Affordable housing	58	47	34
Access to essential services and facilities in rural areas	88	49	70
Support for business and jobs	73	51	42
Business infrastructure e.g. broadband and road links	34	19	22
High quality education and training opportunities	73	53	43
The impact of climate change	27	20	14
Recycling, energy efficiency and the environment	84	63	63