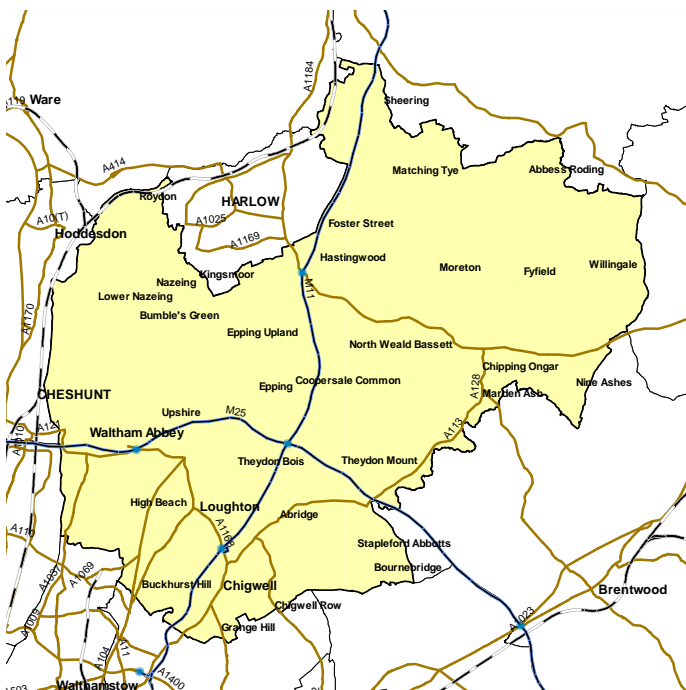


Epping Forest

This profile gives a snapshot of health in your area. With other local information, this Health Profile has been designed to support action by local government and primary care trusts to tackle health inequalities and improve people's health.

Health Profiles are funded by the Department of Health and produced annually by the Association of Public Health Observatories.

To view Health Profiles for other local authorities and to find out how they were produced, visit www.healthprofiles.info



POPULATION 123,000

Based on Ordnance Survey material. © Crown Copyright. All rights reserved. DH 100020290 2008. Other map data © Collins Bartholomew.



Epping Forest at a glance

- The health of the people in Epping Forest is generally significantly better than the England average. For example, adult binge drinking, children's tooth decay and infant deaths are all better than the England average. However, GCSE achievement, hip fracture in the over-65s and road injuries and deaths are all worse than the England average.
- There are inequalities within Epping Forest by location, gender, level of deprivation and ethnicity. Parts of Waltham and Loughton appear to be the most deprived places. Men in the most deprived fifth of areas in Epping Forest live on average 2.5 years shorter lives than those in the most affluent fifth.
- Over the past ten years, early death rates from cancer and from heart disease and stroke have improved, and the latter is currently significantly better than the England average. Death rates from all causes have also improved and are currently similar to the England average.
- One adult in 5 smokes in Epping Forest, which is better than the England average, although smoking continues to kill around 210 Epping Forest adults per year.
- Obesity in adults has increased over the past year. Around 1 adult in four is obese.
- There are around 150 people killed or seriously injured on the roads in Epping Forest every year.
- The West Essex Public Health Annual Report provides more information on this area and is available at www.westessexpct.nhs.uk

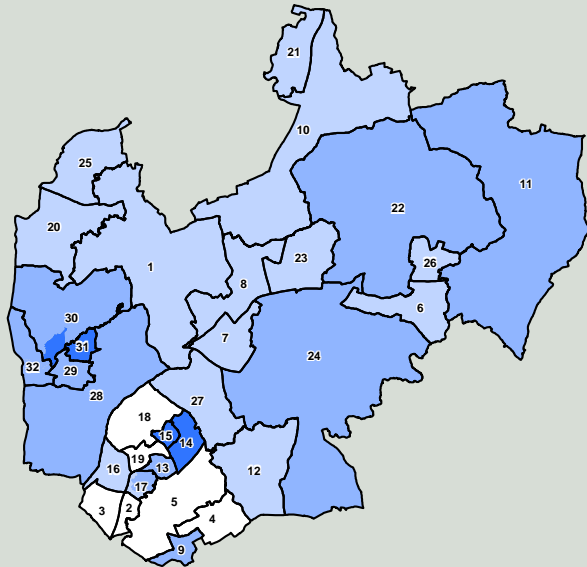


Deprivation: a national perspective

This map shows differences in deprivation between small areas in this local authority, compared to the whole of England (based on IMD 2007).

National deprivation groups

- 1 Least deprived fifth of areas in England
- 2
- 3
- 4
- 5 Most deprived fifth of areas in England



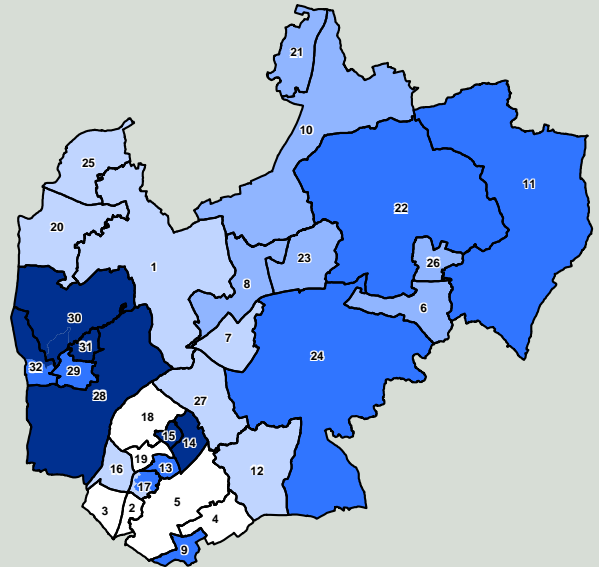
Based on Ordnance Survey material. © Crown Copyright. All rights reserved. DH 100020290 2008

Deprivation: a local perspective

This map shows differences in deprivation between small areas in this local authority, compared to the local authority as a whole (based on IMD 2007).

Local deprivation groups

- 1 Least deprived fifth in this local authority
- 2
- 3
- 4
- 5 Most deprived fifth in this local authority



Based on Ordnance Survey material. © Crown Copyright. All rights reserved. DH 100020290 2008

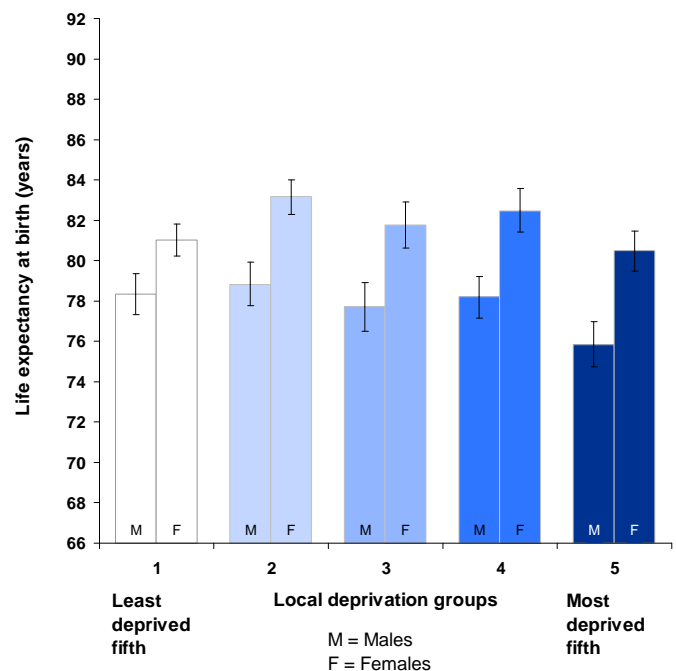
Ward legend

- | | |
|---|------------------------------|
| 1 Broadley Common, Epping Upland & Nazeing | 25 Roydon |
| 2 Buckhurst Hill East | 26 Shelley |
| 3 Buckhurst Hill West | 27 Theydon Bois |
| 4 Chigwell Row | 28 Waltham Abbey High Beach |
| 5 Chigwell Village | 29 Waltham Abbey Honey Lane |
| 6 Chipping Ongar, Greensted & Marden Ash | 30 Waltham Abbey North East |
| 7 Epping Hemnall | 31 Waltham Abbey Paternoster |
| 8 Epping Lindsey & Thornwood Common | 32 Waltham Abbey South West |
| 9 Grange Hill | |
| 10 Hastingwood, Matching & Sheering Village | |
| 11 High Ongar, Willingale & The Rodings | |
| 12 Lambourne | |
| 13 Loughton Alderton | |
| 14 Loughton Broadway | |
| 15 Loughton Fairmead | |
| 16 Loughton Forest | |
| 17 Loughton Roding | |
| 18 Loughton St John's | |
| 19 Loughton St Mary's | |
| 20 Lower Nazeing | |
| 21 Lower Sheering | |
| 22 Moreton & Fyfield | |
| 23 North Weald Bassett | |
| 24 Passingford | |

Ward boundaries 2005 are superimposed upon MSAO (Middle Super Output Area) boundaries. Each MSAO is shaded by Index of Multiple Deprivation (IMD) 2007. For details refer to www.communities.gov.uk. Numbers correspond to ward legend. Ward boundaries may have changed.

Health inequalities: a local perspective

Inequalities in life expectancy (2002-2006) for men and women who live in areas with different levels of deprivation (within this local authority).



95% confidence interval. These indicate the level of uncertainty about each value on the graph. Longer/wider intervals mean more uncertainty. When two intervals do not overlap it is reasonably certain that the two groups are truly different.

Health inequalities: changes over time

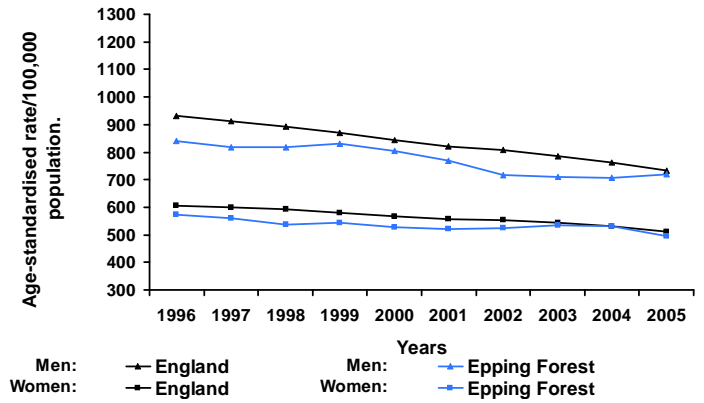
These trend graphs show how changes in health for this local authority compare with changes for the whole of England. Data points are mid-points of 3 year moving averages of annual rates i.e. 1996 represents the 3 year period 1995-97.

Trend 1 compares death rates (at all ages and from all causes) in this local authority with those for England.

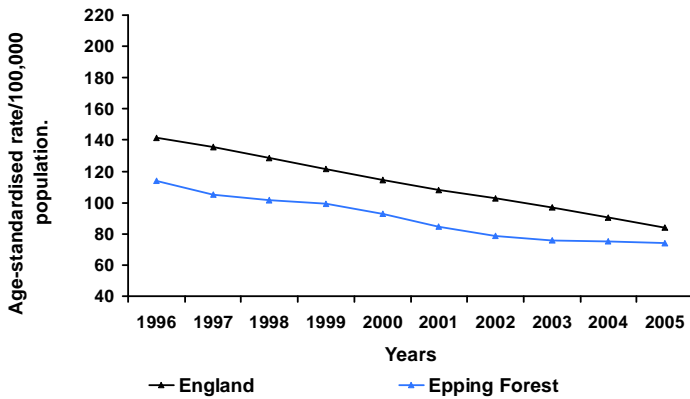
Trend 2 compares rates of early death from heart disease and stroke (in people under 75) in this local authority with those for England.

Trend 3 compares rates of early death from cancer (in people under 75) in this local authority with those for England.

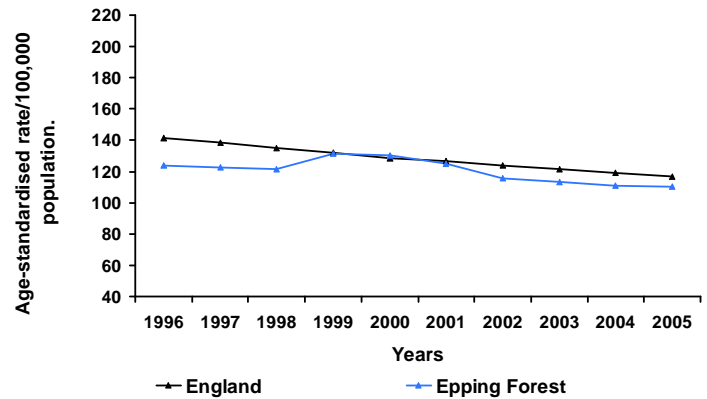
Trend 1: All age, all cause mortality



Trend 2: Early death rates from heart disease and stroke



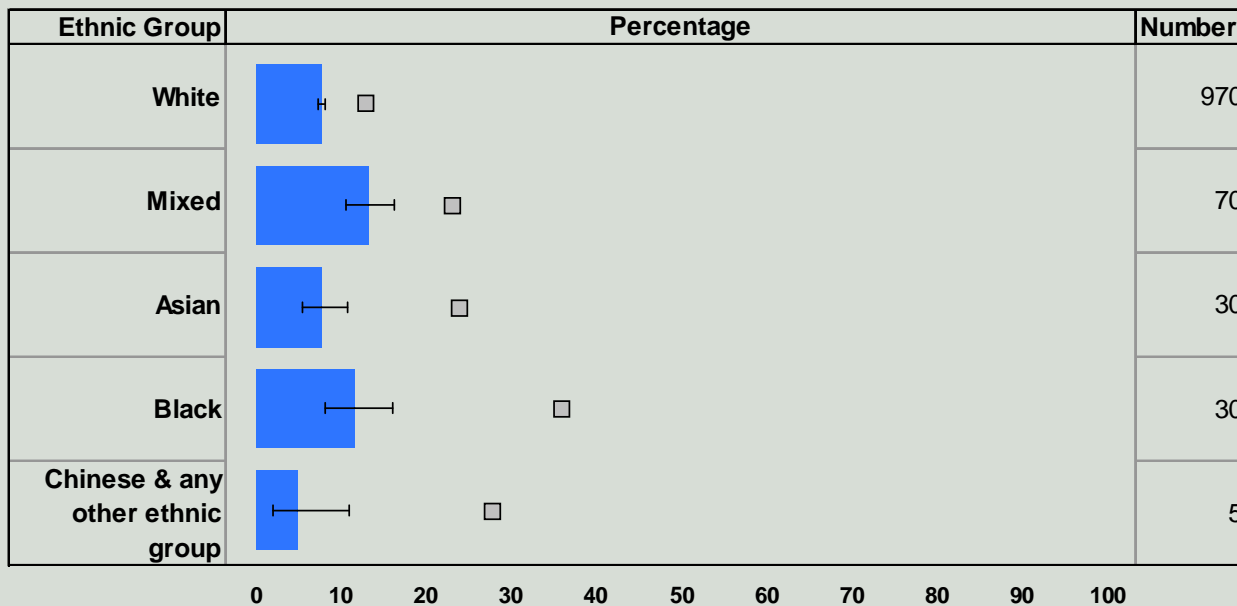
Trend 3: Early death rates from cancer



Health inequalities: ethnicity

This chart compares the percentage of children in each ethnic group who are eligible for free school meals (2007). Eligibility for free school meals is an indicator of deprivation, and people who suffer more deprivation tend to have poorer health. Comparing deprivation by ethnic group helps identify potential health inequalities between groups.

Percentage and number of children eligible for free school meals



Where the total school population in an ethnic group in the local authority is less than 30, no data have been presented and the number column shows n/a. Where the number is less than 5, no percentage is shown.

□ England - average
■ Epping Forest

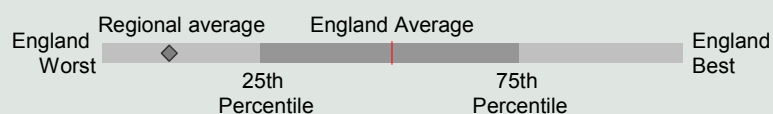
Confidence intervals are shown for local data

Health summary for Epping Forest

The chart below shows how people's health in this local authority compares to the rest of England. The local result for each indicator is shown as a circle, against the range of results for England which is shown as a bar. A green circle may still indicate an important public health problem.

- Significantly worse than England average
- Not significantly different from England average
- Significantly better than England average
- No significance can be calculated

* relates to National Indicator 2007



Domain	Indicator	Local No. Per Year	Local Value	Eng Avg	Eng Worst	England Range	Eng Best
Our communities	1 Deprivation	1483	1.2	19.9	89.2	[Bar chart showing local result as a green circle]	0.0
	2 Children in poverty *	3774	15.8	22.4	66.5	[Bar chart showing local result as a green circle]	6.0
	3 Statutory homelessness	202	4.0	4.4	14.4	[Bar chart showing local result as a yellow circle]	0.0
	4 GCSE achievement (5 A*-C) *	600	54.6	60.1	35.8	[Bar chart showing local result as a red circle]	82.7
	5 Violent crime	1609	13.2	19.3	38.9	[Bar chart showing local result as a green circle]	4.5
	6 Carbon emissions *	816	6.8	7.6	20.6	[Bar chart showing local result as a white circle]	4.6
Children and young people's health	7 Smoking in pregnancy	173	13.4	16.1	38.8	[Bar chart showing local result as a green circle]	4.4
	8 Breast feeding initiation *	920	71.7	69.2	33.2	[Bar chart showing local result as a green circle]	90.9
	9 Physically active children *	10620	88.1	85.7	63.3	[Bar chart showing local result as a green circle]	99.2
	10 Obese children *	94	9.0	9.9	16.1	[Bar chart showing local result as a yellow circle]	4.9
	11 Children's tooth decay (at age 5)	n/a	0.8	1.5	3.2	[Bar chart showing local result as a green circle]	0.4
	12 Teenage pregnancy (under 18) *	61	26.0	41.1	83.1	[Bar chart showing local result as a green circle]	12.5
Adults' health and lifestyle	13 Adults who smoke *	n/a	21.6	24.1	40.9	[Bar chart showing local result as a green circle]	13.7
	14 Binge drinking adults	n/a	14.8	18.0	28.9	[Bar chart showing local result as a green circle]	9.7
	15 Healthy eating adults	n/a	25.9	26.3	14.2	[Bar chart showing local result as a yellow circle]	45.8
	16 Physically active adults	n/a	10.4	11.6	7.5	[Bar chart showing local result as a yellow circle]	17.2
	17 Obese adults	n/a	22.9	23.6	31.2	[Bar chart showing local result as a yellow circle]	11.9
Disease and poor health	18 Under-15s 'not in good health'	205	9.3	11.6	20.8	[Bar chart showing local result as a green circle]	6.4
	19 Incapacity benefits for mental illness *	1320	17.6	27.5	68.6	[Bar chart showing local result as a green circle]	8.4
	20 Hospital stays related to alcohol *	192	149.7	260.3	741.1	[Bar chart showing local result as a green circle]	87.6
	21 Drug misuse	341	4.3	9.9	34.9	[Bar chart showing local result as a white circle]	1.3
	22 People diagnosed with diabetes	4196	3.4	3.7	5.9	[Bar chart showing local result as a green circle]	2.1
	23 Sexually transmitted infections					[Bar chart showing local result as a white circle]	
	24 New cases of tuberculosis	7	5.0	15.0	102.0	[Bar chart showing local result as a green circle]	0.0
	25 Hip fracture in over-65s	174	628.2	479.8	699.8	[Bar chart showing local result as a red circle]	219.0
Life expectancy and causes of death	26 Life expectancy - male *	n/a	77.9	77.3	73.0	[Bar chart showing local result as a yellow circle]	83.1
	27 Life expectancy - female *	n/a	82.1	81.6	78.3	[Bar chart showing local result as a yellow circle]	87.2
	28 Infant deaths	4	2.6	5.0	10.3	[Bar chart showing local result as a green circle]	0.0
	29 Deaths from smoking	210	204.6	225.4	355.0	[Bar chart showing local result as a green circle]	139.4
	30 Early deaths: heart disease & stroke *	102	74.1	84.2	142.4	[Bar chart showing local result as a green circle]	39.7
	31 Early deaths: cancer *	150	110.4	117.1	167.8	[Bar chart showing local result as a yellow circle]	76.7
	32 Road injuries and deaths *	144	117.5	56.3	194.6	[Bar chart showing local result as a red circle]	20.8

Note (numbers in bold refer to the above indicators)

1 % of people in this area living in 20% most deprived areas of England 2005 2 % of children living in families receiving means-tested benefits 2005 3 Crude rate per 1,000 households 2005-2006 4 % at Key Stage 4 2006-2007 5 Recorded violence against the person crimes (crude rate per 1,000 population) 2006-2007 6 Total end user CO2 emissions per capita (tonnes CO2 per resident) 2005 7 % of mothers smoking in pregnancy where status is known 2006-2007 8 % of mothers initiating breast feeding where status known 2006-2007 9 % 5-16 year olds who spend at least 2 hrs/wk on high quality PE and school sport 2006-2007 10 % Schoolchildren in Reception year. 2006-2007 11 Average (mean) number of teeth per child which were actively decayed, filled, or had been extracted (age 5) 2005-2006 12 Under-18 conception rate per 1,000 females (crude rate) 2004-2006 (provisional) 13 % Modelled estimate from Health Survey for England. 2003-2005 14 % Modelled estimate from Health Survey for England. 2003-2005 15 % Modelled estimate from Health Survey for England. 2003-2005 16 % aged 16+ 2005/06 17 % Modelled estimate from Health Survey for England. 2003-2005 18 % who self assessed general health as 'not good' (directly age standardised) 2001 19 Crude rate per 1,000 working age population. 2006 20 Directly age and sex standardised rate per 100,000 pop. 2006-2007 21 Crude rate per 1000 population aged 15-64. No significance calculated for lower tier authorities. 2004-2005 22 % of people on GP registers with a recorded diagnosis of diabetes. 2005-2006 23 Indicator blank as data not yet available for local authorities. 24 Per 100,000 population (3-year average crude rate) 2004-2006 25 Directly age-standardised rate for emergency admission 2006/07 26 At birth, years 2004-2006 27 At birth, years 2004-2006 28 Rate /1,000 live births 2004-06 29 Per 100,000 population age 35+, directly age standardised rate. 2004-2006 30 Directly age standardised rate/100,000 pop. under 75 2004-2006 31 Directly age standardised rate/100,000 pop. under 75 2004-2006 32 Per 100,000 population (3-year average crude rate) 2004-2006

For more information from your regional PHO, visit www.apho.org.uk

You may use this profile for non-commercial purposes provided the source is acknowledged. 'Source: APHO and Department of Health. © Crown Copyright 2008.'