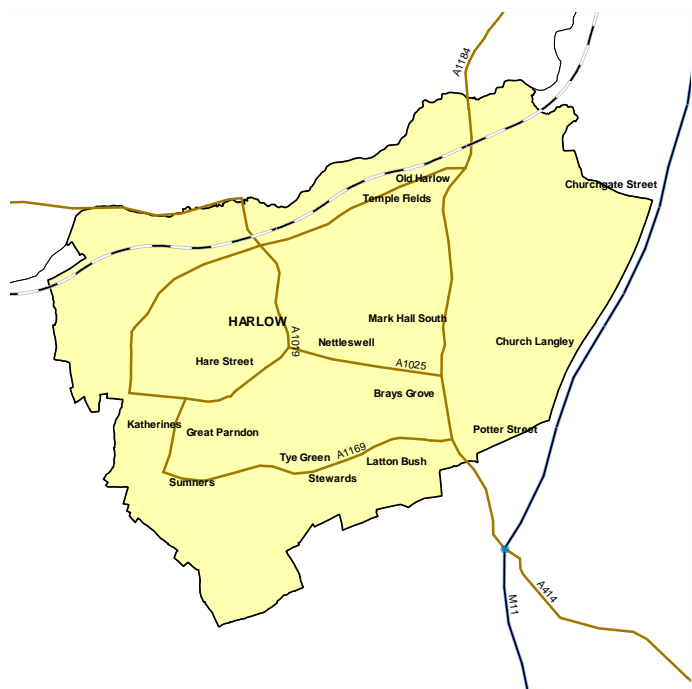


# Harlow

This profile gives a snapshot of health in your area. With other local information, this Health Profile has been designed to support action by local government and primary care trusts to tackle health inequalities and improve people's health.

Health Profiles are funded by the Department of Health and produced annually by the Association of Public Health Observatories.

To view Health Profiles for other local authorities and to find out how they were produced, visit [www.healthprofiles.info](http://www.healthprofiles.info)



## POPULATION 78,000

Based on Ordnance Survey material. © Crown Copyright. All rights reserved.  
DH 100020290 2008. Other map data © Collins Bartholomew.



## Harlow at a glance

- The health of people in Harlow is generally close to the England average. However, some indicators including physical activity in children and adults, obesity in adults, teenage pregnancy and violent crime, all appear worse than the England average. Children's tooth decay, life expectancy in women and road injuries and deaths appear better than the England average.
- There are inequalities within Harlow by location, gender, level of deprivation and ethnicity. For example, Nettlewell and parts of Staple Tye and Harlow Common are the most deprived areas in Harlow.
- Over the past ten years, all cause mortality and early death rates from cancer, heart disease and stroke have declined and are currently similar to the England average, apart from all cause mortality in women, which is lower.
- The number of children living in poverty is now higher than the England average.
- Over 1 adult in 4 smokes and smoking kills 125 people in Harlow every year. More than 1 adult in 4 is obese.
- The West Essex Public Health Annual Report provides more information on this area and is available at [www.westessexpct.nhs.uk](http://www.westessexpct.nhs.uk) under "Publications".

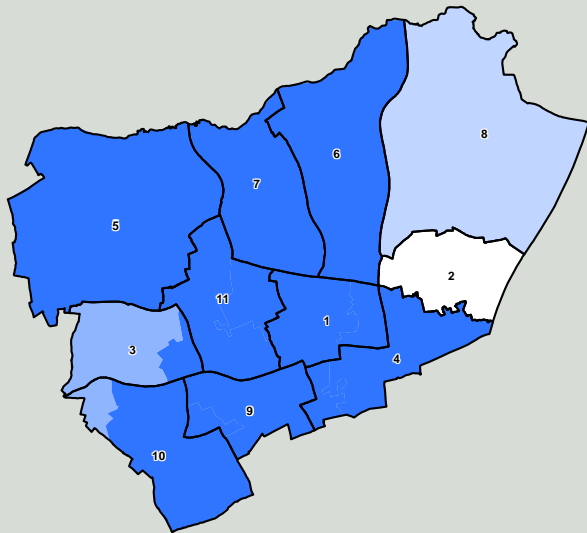


## Deprivation: a national perspective

This map shows differences in deprivation between small areas in this local authority, *compared to the whole of England* (based on IMD 2007).

### National deprivation groups

- 1 Least deprived fifth of areas in England
- 2
- 3
- 4
- 5 Most deprived fifth of areas in England



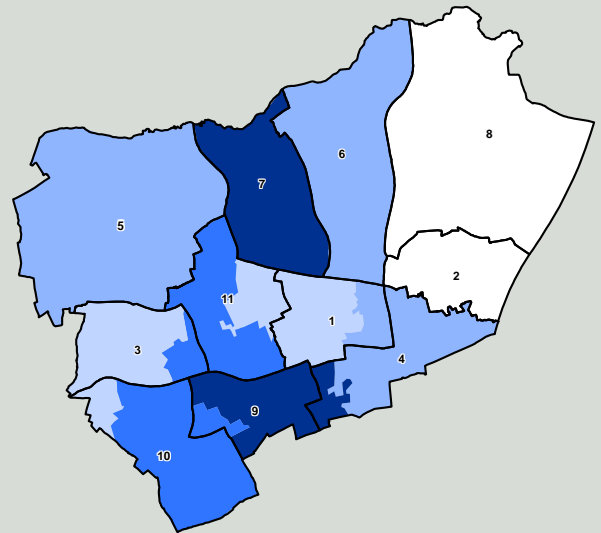
Based on Ordnance Survey material. © Crown Copyright. All rights reserved. DH 100020290 2008

## Deprivation: a local perspective

This map shows differences in deprivation between small areas in this local authority, *compared to the local authority as a whole* (based on IMD 2007).

### Local deprivation groups

- 1 Least deprived fifth in this local authority
- 2
- 3
- 4
- 5 Most deprived fifth in this local authority



Based on Ordnance Survey material. © Crown Copyright. All rights reserved. DH 100020290 2008

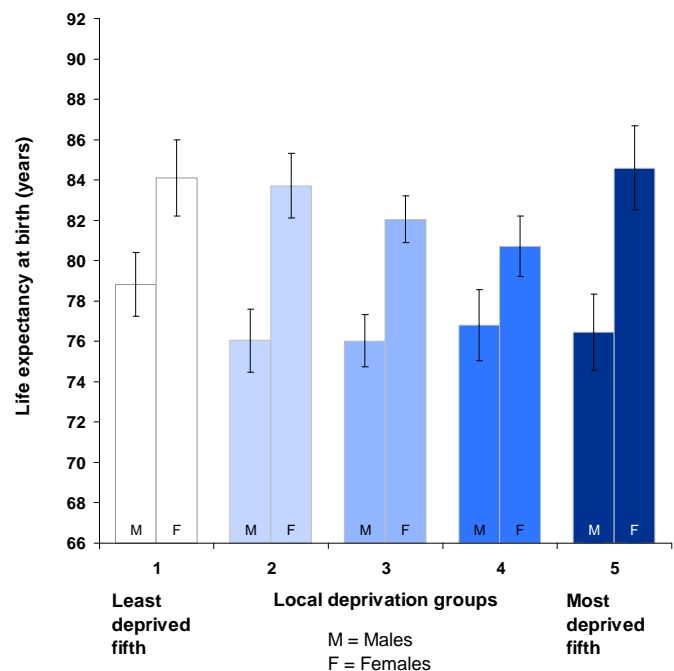
## Ward legend

- 1 Bush Fair
- 2 Church Langley
- 3 Great Parndon
- 4 Harlow Common
- 5 Little Parndon and Hare Street
- 6 Mark Hall
- 7 Netteswell
- 8 Old Harlow
- 9 Staple Tye
- 10 Sumners and Kingsmoor
- 11 Toddbrook

Ward boundaries 2005 are superimposed upon MSA (Middle Super Output Area) boundaries. Each MSA is shaded by Index of Multiple Deprivation (IMD) 2007. For details refer to [www.communities.gov.uk](http://www.communities.gov.uk). Numbers correspond to ward legend. Ward boundaries may have changed.

## Health inequalities: a local perspective

Inequalities in life expectancy (2002-2006) for men and women who live in areas with different levels of deprivation (within this local authority).



95% confidence interval. These indicate the level of uncertainty about each value on the graph. Longer/wider intervals mean more uncertainty. When two intervals do not overlap it is reasonably certain that the two groups are truly different.

## Health inequalities: changes over time

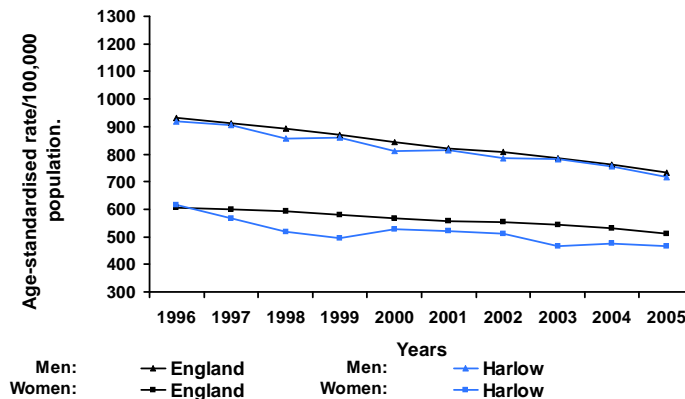
These trend graphs show how changes in health for this local authority compare with changes for the whole of England. Data points are mid-points of 3 year moving averages of annual rates i.e. 1996 represents the 3 year period 1995-97.

Trend 1 compares death rates (at all ages and from all causes) in this local authority with those for England.

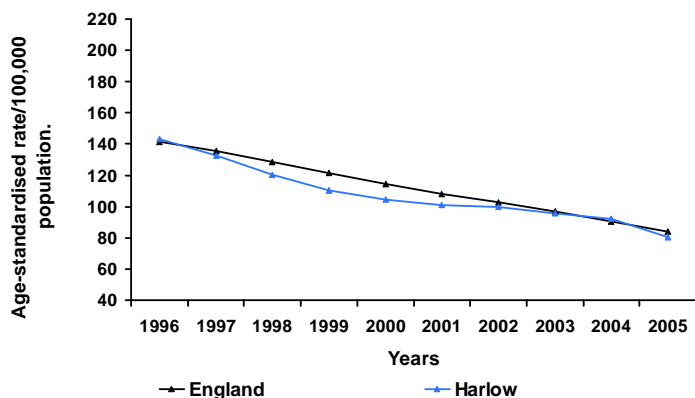
Trend 2 compares rates of early death from heart disease and stroke (in people under 75) in this local authority with those for England.

Trend 3 compares rates of early death from cancer (in people under 75) in this local authority with those for England.

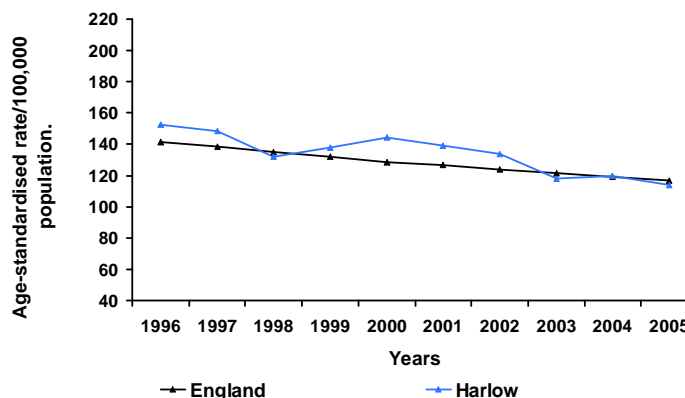
### Trend 1: All age, all cause mortality



### Trend 2: Early death rates from heart disease and stroke



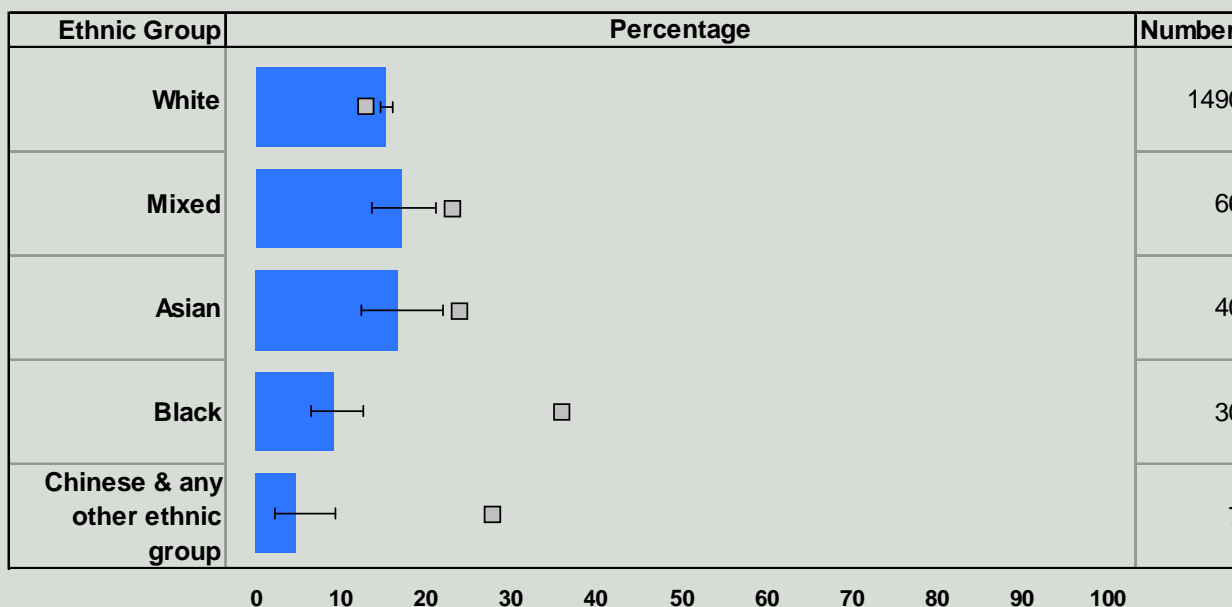
### Trend 3: Early death rates from cancer



## Health inequalities: ethnicity

This chart compares the percentage of children in each ethnic group who are eligible for free school meals (2007). Eligibility for free school meals is an indicator of deprivation, and people who suffer more deprivation tend to have poorer health. Comparing deprivation by ethnic group helps identify potential health inequalities between groups.

### Percentage and number of children eligible for free school meals

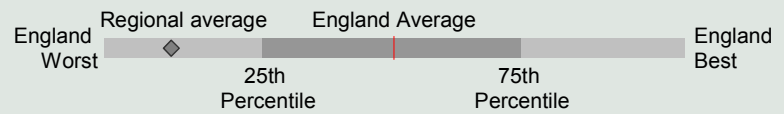


# Health summary for Harlow

The chart below shows how people's health in this local authority compares to the rest of England. The local result for each indicator is shown as a circle, against the range of results for England which is shown as a bar. A green circle may still indicate an important public health problem.

- Significantly worse than England average
- Not significantly different from England average
- Significantly better than England average
- No significance can be calculated

\* relates to National Indicator 2007



Domain	Indicator	Local No. Per Year	Local Value	Eng Avg	Eng Worst	England Range	Eng Best
Our communities	<b>1</b> Deprivation	1367	1.8	19.9	89.2	[Bar chart showing local result as a green circle significantly better than England average]	0.0
	<b>2</b> Children in poverty *	3840	23.9	22.4	66.5	[Bar chart showing local result as a red circle significantly worse than England average]	6.0
	<b>3</b> Statutory homelessness	250	7.1	4.4	14.4	[Bar chart showing local result as a red circle significantly worse than England average]	0.0
	<b>4</b> GCSE achievement (5 A*-C) *	633	62.6	60.1	35.8	[Bar chart showing local result as a yellow circle not significantly different from England average]	82.7
	<b>5</b> Violent crime	1990	25.5	19.3	38.9	[Bar chart showing local result as a red circle significantly worse than England average]	4.5
	<b>6</b> Carbon emissions *	552	7.0	7.6	20.6	[Bar chart showing local result as a white circle with no significance calculated]	4.6
Children and young people's health	<b>7</b> Smoking in pregnancy	139	13.4	16.1	38.8	[Bar chart showing local result as a green circle significantly better than England average]	4.4
	<b>8</b> Breast feeding initiation *	736	71.7	69.2	33.2	[Bar chart showing local result as a yellow circle not significantly different from England average]	90.9
	<b>9</b> Physically active children *	8313	78.3	85.7	63.3	[Bar chart showing local result as a red circle significantly worse than England average]	99.2
	<b>10</b> Obese children *	93	10.6	9.9	16.1	[Bar chart showing local result as a yellow circle not significantly different from England average]	4.9
	<b>11</b> Children's tooth decay (at age 5)	n/a	0.5	1.5	3.2	[Bar chart showing local result as a green circle significantly better than England average]	0.4
	<b>12</b> Teenage pregnancy (under 18) *	76	49.6	41.1	83.1	[Bar chart showing local result as a red circle significantly worse than England average]	12.5
Adults' health and lifestyle	<b>13</b> Adults who smoke *	n/a	27.5	24.1	40.9	[Bar chart showing local result as a yellow circle not significantly different from England average]	13.7
	<b>14</b> Binge drinking adults	n/a	15.2	18.0	28.9	[Bar chart showing local result as a green circle significantly better than England average]	9.7
	<b>15</b> Healthy eating adults	n/a	23.2	26.3	14.2	[Bar chart showing local result as a red circle significantly worse than England average]	45.8
	<b>16</b> Physically active adults	n/a	8.5	11.6	7.5	[Bar chart showing local result as a red circle significantly worse than England average]	17.2
	<b>17</b> Obese adults	n/a	26.8	23.6	31.2	[Bar chart showing local result as a red circle significantly worse than England average]	11.9
Disease and poor health	<b>18</b> Under-15s 'not in good health'	219	14.0	11.6	20.8	[Bar chart showing local result as a red circle significantly worse than England average]	6.4
	<b>19</b> Incapacity benefits for mental illness *	1240	25.6	27.5	68.6	[Bar chart showing local result as a green circle significantly better than England average]	8.4
	<b>20</b> Hospital stays related to alcohol *	151	185.1	260.3	741.1	[Bar chart showing local result as a green circle significantly better than England average]	87.6
	<b>21</b> Drug misuse	436	8.6	9.9	34.9	[Bar chart showing local result as a white circle with no significance calculated]	1.3
	<b>22</b> People diagnosed with diabetes	3087	4.0	3.7	5.9	[Bar chart showing local result as a red circle significantly worse than England average]	2.1
	<b>23</b> Sexually transmitted infections					[Bar chart showing local result as a white circle with no significance calculated]	
	<b>24</b> New cases of tuberculosis	5	6.0	15.0	102.0	[Bar chart showing local result as a green circle significantly better than England average]	0.0
	<b>25</b> Hip fracture in over-65s	66	460.7	479.8	699.8	[Bar chart showing local result as a yellow circle not significantly different from England average]	219.0
Life expectancy and causes of death	<b>26</b> Life expectancy - male *	n/a	77.3	77.3	73.0	[Bar chart showing local result as a yellow circle not significantly different from England average]	83.1
	<b>27</b> Life expectancy - female *	n/a	83.0	81.6	78.3	[Bar chart showing local result as a green circle significantly better than England average]	87.2
	<b>28</b> Infant deaths	6	5.0	5.0	10.3	[Bar chart showing local result as a yellow circle not significantly different from England average]	0.0
	<b>29</b> Deaths from smoking	125	235.7	225.4	355.0	[Bar chart showing local result as a yellow circle not significantly different from England average]	139.4
	<b>30</b> Early deaths: heart disease & stroke *	64	80.7	84.2	142.4	[Bar chart showing local result as a yellow circle not significantly different from England average]	39.7
	<b>31</b> Early deaths: cancer *	90	113.9	117.1	167.8	[Bar chart showing local result as a yellow circle not significantly different from England average]	76.7
	<b>32</b> Road injuries and deaths *	34	43.6	56.3	194.6	[Bar chart showing local result as a green circle significantly better than England average]	20.8

**Note** (numbers in bold refer to the above indicators)

1 % of people in this area living in 20% most deprived areas of England 2005 2 % of children living in families receiving means-tested benefits 2005 3 Crude rate per 1,000 households 2005-2006 4 % at Key Stage 4 2006-2007 5 Recorded violence against the person crimes (crude rate per 1,000 population) 2006-2007 6 Total end user CO2 emissions per capita (tonnes CO2 per resident) 2005 7 % of mothers smoking in pregnancy where status is known 2006-2007 8 % of mothers initiating breast feeding where status known 2006-2007 9 % 5-16 year olds who spend at least 2 hrs/wk on high quality PE and school sport 2006-2007 10 % Schoolchildren in Reception year. 2006-2007 11 Average (mean) number of teeth per child which were actively decayed, filled, or had been extracted (age 5) 2005-2006 12 Under-18 conception rate per 1,000 females (crude rate) 2004-2006 (provisional) 13 % Modelled estimate from Health Survey for England. 2003-2005 14 % Modelled estimate from Health Survey for England. 2003-2005 15 % Modelled estimate from Health Survey for England. 2003-2005 16 % aged 16+ 2005/06 17 % Modelled estimate from Health Survey for England. 2003-2005 18 % who self assessed general health as 'not good' (directly age standardised) 2001 19 Crude rate per 1,000 working age population. 2006 20 Directly age and sex standardised rate per 100,000 pop. 2006-2007 21 Crude rate per 1000 population aged 15-64. No significance calculated for lower tier authorities. 2004-2005 22 % of people on GP registers with a recorded diagnosis of diabetes. 2005-2006 23 Indicator blank as data not yet available for local authorities. 24 Per 100,000 population (3-year average crude rate) 2004-2006 25 Directly age-standardised rate for emergency admission 2006/07 26 At birth, years 2004-2006 27 At birth, years 2004-2006 28 Rate /1,000 live births 2004-06 29 Per 100,000 population age 35+, directly age standardised rate. 2004-2006 30 Directly age standardised rate/100,000 pop. under 75 2004-2006 31 Directly age standardised rate/100,000 pop. under 75 2004-2006 32 Per 100,000 population (3-year average crude rate) 2004-2006

For more information from your regional PHO, visit [www.apho.org.uk](http://www.apho.org.uk)

You may use this profile for non-commercial purposes provided the source is acknowledged. 'Source: APHO and Department of Health. © Crown Copyright 2008.'